

To kind attention of:
C.A. Mr. Wieslaw Sordyl
INTERSTONE LTD
Andrychow PL.

Dear Sirs,

Laminam declares that in during its production phase, dimensional controls after firing and after cutting process are executed.

In particular realized checks are:

- Thickness control
- Dimensional control: Length and width;
- Squareness control: differences of the diagonal
- planarity control

1. Thickness control

the thickness control is executed leaving kiln, using a thickness gauge at the two opposite sides of the slab. (like in figure 1)

the tolerance for thickness is: +/- 0.5 mm

2. Control the Width and Length

At the end of the firing phase length and width are controlled according to the following scheme:

The length is measured in the center of the slab, while the width is measured at the begin, in the Center and at the end. (see figure 1).

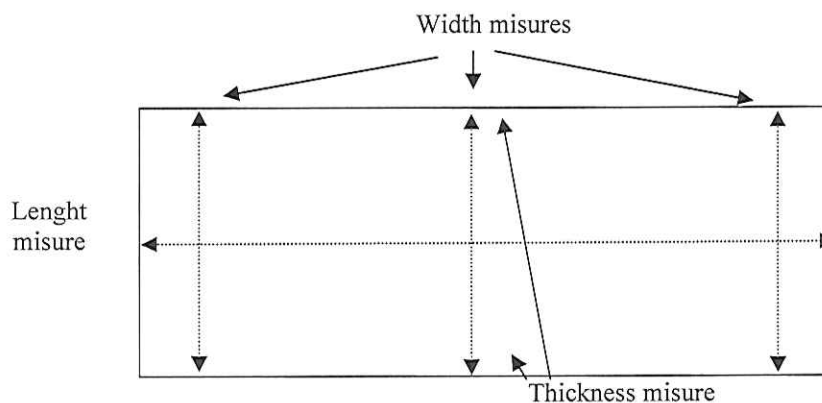


Figure 1

the tolerance for side(width and length) is: +/- 0.5 mm

3. Control squareness

After the cutting step, dimensional controls are repeated (length and width above), orthogonality control is also executed by the measurement of the difference between the diagonals, that should be at the most 1 mm. (see figure 2)

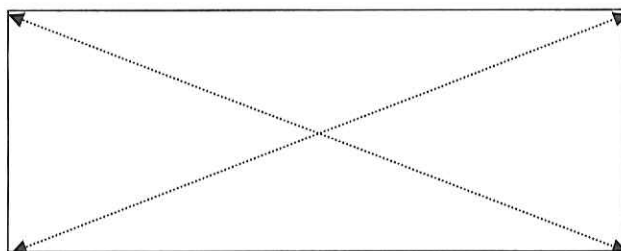
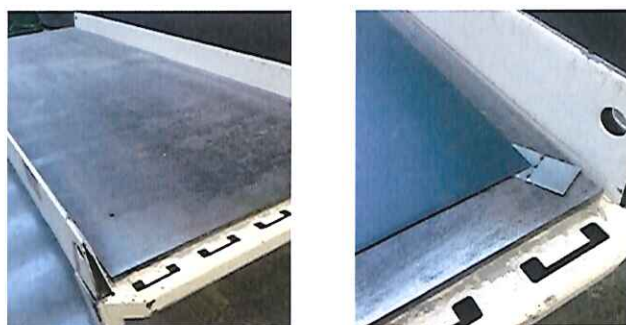


Figure 2

4. Planarity Control

Step 1

the slab is putted on the sample plate (comparison plate) that is at the end of the kiln, with glazed part facing upwards.



To Measure the planarity , it is necessary to insert into the empty space between the corner and the comparison plate, a steel thickness gauge presents in the end of production line, beyond kiln.

Step 2

- to arrange slab on the sample plate (comparison plate) present in the end of the kiln, with the part glazed downwards.
- to measure the planarity in necessary inserting, in the empty space between angle and crate, the steel thickness gauge that is presents in the end of kiln:

This instrument is composed by two pieces of different thicknesses (2 mm and 3 mm) that define outline three of planarity range.

the tolerance for side(width and length) is: +/- 2.0 mm

Sincerely

Quality Manager
Pederzoli Roberto